

Cal Flame[®]

THE HOME RESORT EXPERIENCE





Award-Winning Hearth and Barbecue Manufacturer

Cal Flame is an award-winning hearth and barbecue manufacturer that offers innovative backyard solutions for every home and budget. The feature-rich Cal Flame lineup includes grills, grilling and drop-in accessories, customized outdoor kitchens, custom barbecue carts, fireplaces and firepits. Best of all, Cal Flame offers you peace of mind knowing that all Cal Flame products are ETL and CE listed for your safety. With Cal Flame, your dream backyard is finally within reach!

Gourmet Grilling at its Finest



Only Cal Flame offers an extensive line of drop-in grills for every BBQ enthusiast and grilling preference, from charcoal to convection. Like all Cal Flame products, Cal Flame drop-in grills are engineered using the latest technology and product innovations. Cal Flame's exclusive removable V-shaped grill grates have been designed to lock in the heat and prevent smaller food from falling through. Cal Flame grills also offer 25% more grilling capacity than other grill manufacturers and feature independent knobs with an exclusive patented design.



Entertain with a Wide Variety of Gourmet Barbecue Accessories

Turn an ordinary barbecue island into a state-of-the-art outdoor kitchen with Cal Flame barbecue accessories. Only Cal Flame offers all the gourmet necessities you need to build a true outdoor kitchen. With Cal Flame, you can accessorize your barbecue island or cart to create the outdoor kitchen solution of your dreams. Cal Flame eliminates the need to run inside during a backyard barbecue by providing the convenience of an indoor kitchen...without the walls.



State-of-the-Art Outdoor Kitchen

A Cal Flame outdoor kitchen is the perfect way to extend your living space and add value to your home. You can choose the barbecue island that's right for you from the widest selection in the industry -from 4 ft. to 10 ft. barbecue islands. With Cal Flame, you can customize your barbecue island with the gourmet grill and accessories of your choice. Complete the look of your island with your choice of granite, porcelain tile or natural stone tile counter tops, and stucco or cultured stone base finishes -available in an array of elegant base designs. Choose from the widest range of barbecue island designs in various configurations to complement your personal Home Resort design, lifestyle and backyard landscape.



Extend the Outdoor Season

Cal Flame outdoor fireplace and firepits are the perfect way to extend the outdoor season and seek warmth in the great outdoors. The innovative Cal Flame outdoor fireplaces and firepits feature all the latest technology and allow you to enjoy cool evenings while entertaining family and friends in your own private backyard retreat. A Cal Flame outdoor fireplace or firepit instantly adds a warm glow to your outdoor home resort, creating a calm, inviting ambiance. Cal Flame outdoor fireplaces and firepits can be customized to fit your personal taste and complement any backyard landscape. Designed with the finest material and craftsmanship, Cal Flame outdoor fireplaces and firepits are built to withstand all outdoor elements for years of enjoyment. Cal Flame outdoor fireplaces feature a 316-galvanized steel frame, sturdy one-piece construction, ETL approval and have a liquid propane/natural gas option.

A HISTORY OF AWARD WINNING EXCELLENCE

Over the years, Cal Flame has earned a reputation for producing quality bbq islands, bbq carts, bbq hardware, fireplaces and firepits that are at the forefront of innovation & design. Cal Flame is honored to have its home resort and bbq products so highly regarded by *Hearth & Home Magazine* - Honoring Innovation in Design and Technology for the Hearth, Patio and Barbecue Industry.

Cal Flame continues to be the leader in innovation and designs in all Cal Flame categories, creating the ultimate outdoor living experience.

Cal Flame also supports the local community by donating products to foundations like The Boys & Girls Club, Weingart Center Association and more. Cal Flame products can also be found in local and national publications and seen on popular national television shows!





BUILT-IN TOP GUN™ 5-BURNER CONVECTION GRILL

The innovative Top Gun™ 5 Burner Convection Grill has been designed to fit any Cal Flame barbecue cart or island! It features five cast stainless steel burners and a powerful centrifugal fan that uniformly circulates heat throughout the grilling area. It also features a glass window on the hood for your grilling convenience and a striking new light feature on each stainless steel knob - a Cal Flame exclusive!



BBQ Grill Top Gun™ 5-Burner Convection Grill

Model No.: BBQ18875CTG

Dimensions: 39"W x 24"D x 22 7/16"H

Cut-Out Dimensions: 38 1/4"W x 22"D x 9 1/2"H

BTU: Five (5) 15,000 BTU Cast Stainless Steel Burners
Two (2) 10,000 BTU Ceramic Core Infrared Burners
One (1) 2,500 BTU Stainless Steel Burner

Total BTU: 95,000

FEATURES

- Patented Convection Technology
- Patented Cast Stainless Steel Knobs with multi-colored LED Bezels
- Seamless Design with Durable 304-Stainless Steel Construction
- 1,000 sq. in. Cooking Surface
- Removable Heavy-Duty Grates with V-Grate Cooking Design
- Glass Viewing Window
- Dual Halogen Interior Lights
- Independent Burner Ignition System
- Two-Position Full-Width Warming Rack
- Rotisserie with Adjustable Motor Mount
- Full Width Stainless Steel Drip Tray on Rollers
- Built-In Temperature Gauge
- Built-In Smoker Box with dedicated burner
- Vented Knob Splash Guards
- Burner Lip Guards
- Natural Gas Conversion Kit



Exclusive PATENTED CONVECTION TECHNOLOGY

An option once only found in the kitchen is now available for the cooking enthusiast outdoors. Convection cooking uses high velocity fans to distribute hot air throughout the entire cavity of the grill when the grill hood is shut. By circulating hot air, cooking times are greatly reduced and food is cooked evenly. Compared to conventional barbecue grills, cooking with a convection grill offers faster pre-heat times, reduced gas consumption, and increased cooking control.

High velocity fans located at the rear of the grill circulates heated air around and against the food creating an overall ambient temperature. The result of this motion is even baking and delightful textures. Convection barbecue grills also reduce cooking



CONVECTION Y

times up to 30% and use up to 25% less fuel than traditional barbecue grills. By adding convection control to a barbecue grill, grilling enthusiasts can now enjoy the convenience of baking outdoors while grilling their favorite meats, vegetables and poultry at the same time.



Cal Flame exclusive custom knobs feature one-hand operation with an individual ignitor per burner.

BUILT-IN CONVECTION BARBECUE GRILLS

Gourmet recipes are ready to serve faster with convection cooking. Made of solid 304-stainless steel, our burners emit up to 95,000 BTU with our 5-burner grill (75,000 BTU – 4-burner grill) and have a ten year warranty. Cal Flame Convection Grills are also equipped with premium features and added value.



BBQ Grill Convection 5 Burner

Model No.: BBQ18875CP

Dimensions: 39"W x 24"D x 22 7/16"H

Cut-Out Dimensions: 38 1/4"W x 22"D x 9 1/2"H

BTU: Five (5) 15,000 BTU Cast Stainless Steel Burners
Two (2) 10,000 BTU Ceramic Core Infrared Burners

Total BTU: 95,000

FEATURES

- Patented Convection Technology
- Patented Cast Stainless Steel Knobs
- Seamless Design with Durable 304-Stainless Steel Construction
- 5 Burner-1,000 sq. in. Cooking Surface; 4 Burner-800 sq. in. Cooking Surface
- Removable Heavy-Duty Grates with V-Grate Cooking Design
- Dual Halogen Interior Lights
- Independent Burner Ignition System
- Two-Position Full-Width Warming Rack
- Rotisserie with Adjustable Motor Mount
- Full Width Stainless Steel Drip Tray on Rollers
- Built-In Temperature Gauge
- Vented Knob Splash Guards
- Burner Lip Guards
- Natural Gas Conversion Kit



BBQ Grill Convection 4 Burner

Model No.: BBQ18874CP

Dimensions: 31 3/4"W x 24"D x 22 7/16"H

Cut-Out Dimensions: 30 7/8"W x 22"D x 9 1/2"H

BTU: Four (4) 15,000 BTU Cast Stainless Steel Burners
One (1) 12,000 BTU Ceramic Core Infrared Burners

Total BTU: 75,000

BUILT-IN P SERIES™ BARBECUE GRILL

Cal Flame has introduced many industry firsts that revolutionized the way grills are made and offer design features that grilling enthusiasts expect from today's modern outdoor grills. The Cal Flame P-Series Grills are no exception to the rule. Each P-Series Grill is crafted using 304-stainless steel and includes signature features such as cast stainless steel burners with independent ignitor switches and heavy duty V-patterned grates on a large cooking surface.



BBQ Grill P Series 6 Burner

Model No.: BBQ18P06

Dimensions: 46 1/2"W x 24"D x 227/16"H

Cut-Out Dimensions: 45 3/4"W x 22"D x 91/2"H

BTU: Six (6) 15,000 BTU Cast Stainless Steel Burners, Two (2) 10,000 BTU Ceramic Core Infrared Burners

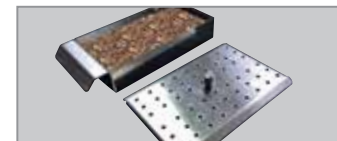
Total BTU: 110,000

FEATURES

- Patented Cast Stainless Steel Knobs
- Seamless Design with Durable 304-Stainless Steel Construction
- P6 -1,100 sq. in. Cooking Surface
- Removable Heavy-Duty Grates with V-Grate Cooking Design
- Dual Halogen Interior Lights
- Independent Burner Ignition System
- Two-Position Full-Width Warming Rack
- Rotisserie with Adjustable Motor Mount
- Full Width Stainless Steel Drip Tray on Rollers
- Built-In Extra Large Temperature Gauge
- Vented Knob Splash Guards
- Burner Lip Guards
- Light Switch with LED Bezel
- P-Griddle Tray
- P-Smoker Box
- P-Grill Cover



P-Griddle Tray Part#: BBQ13867
Enjoy favorites like eggs or bacon with this griddle tray.



P-Smoke Tray Part#: BBQ13855P
Infuse your Cal Flame grill with the smoky flavor everyone loves with this convenient smoke tray that fits any Cal Flame grill!



P-Grill Cover Part#: BBQCP4-B or CP5-B
This grill cover keeps your Cal Flame Built-In Barbecue Grill looking its best by protecting it against weather damage. Cover fits 4 and 5 burner P-Series grills.



Rotisserie Part#: BBQ08856P4 or P5
Enjoy the full bodied taste of rotisserie cooking with rotisseries that can be mounted in left or right configurations!
***Rotisserie Motor 110V**



BBQ Grill P Series 5 Burner

Model No.: BBQ18P05

Dimensions: 39"W x 24"D x 22 7/16"H

Cut-Out Dimensions: 38 1/4"W x 22"D x 9 1/2"H

BTU: Five (5) 15,000 BTU Cast Stainless Steel Burners
Two (2) 10,000 BTU Ceramic Core Infrared Burners

Total BTU: 95,000



BBQ Grill P Series 4 Burner

Model No.: BBQ18P04

Dimensions: 31 3/4"W x 24"D x 22 7/16"H

Cut-Out Dimensions: 30 7/8"W x 22"D x 9 1/2"H

BTU: Four (4) 15,000 BTU Cast Stainless Steel Burners
One (1) 15,000 BTU Ceramic Core Infrared Burners

Total BTU: 75,000

BUILT-IN G-SERIES™ BARBECUE GRILL

Cal Flame's G-Series Grills are the perfect heavy-duty grills for first-time buyers searching for value. G-Series grills are constructed of 430-stainless steel, built with two-layer walls and feature Cal Flame's proprietary V-Grates, a temperature gauge, and porcelain-coated cast iron burners. Designed to pair with any Cal Flame Barbecue Island or Grill Cart, G-Series grills offer multiple upgrades and boost enough BTU-power to meet the needs of any culinary enthusiast.



BBQ Grill G Series 5 Burner

Model No.: BBQ18G05

Dimensions: 39"W x 24"D x 22 7/16"H

Cut-Out Dimensions: 38 1/4"W x 22 1/4"D x 9 1/2"H

BTU: Five (5) 15,000 BTU Cast Iron, Porcelain Coated Burners

Total BTU: 75,000

FEATURES

- Patented Cast Stainless Steel Knobs
- Heavy Duty Porcelain Coated Cast Iron Burners
- Seamless Design with Durable 430-Stainless Steel 16-Gauge Construction
- G5-1000 sq. in. Cooking Surface;
G4-800 sq. in. Cooking Surface;
G3-600 sq. in. Cooking Surface
- Removable Heavy-Duty Grates with V-Grate Cooking Design
- Independent Burner Ignition System
- Two-Position Full-Width Warming Rack
- Full Width Stainless Steel Drip Tray on Rollers
- Built-In Temperature Gauge
- Vented Knob Splash Guards
- Burner Lip Guards



BBQ Grill G Series 4 Burner

Model No.: BBQ18G04

Dimensions: 31 1/2"W x 24"D x 22 7/16"H

Cut-Out Dimensions: 30 7/8"W x 22"D x 9 1/2"H

BTU: Four (4) 15,000 BTU Cast Iron, Porcelain Coated Burners

Total BTU: 60,000



BBQ Grill G Series 3 Burner

Model No.: BBQ18G03

Dimensions: 24 1/2"W x 24"D x 22 7/16"H

Cut-Out Dimensions: 23 1/2"W x 22 1/4"D x 9 1/2"H

BTU: Three (3) 15,000 BTU Cast Iron, Porcelain Coated Burners

Total BTU: 45,000

BUILT-IN G SERIES™ CHARCOAL BARBECUE GRILL

For barbecue purists there is no substitute for a charcoal grill. Charcoal burns at a higher temperature than gas, allowing a skilled grill master to easily sear meat. This 800 sq. in. charcoal grill features sturdy 430-stainless steel construction as well as a temperature gauge and exclusive V-patterned grates. An ergonomically designed handle easily cranks the charcoal tray to your desired height giving you the control you need to adjust the distribution of heat produced from your charcoal briquettes. Including a charcoal grill to your outdoor kitchen is a perfect choice for recipes that require a traditional smoke flavor.



BBQ Grill G Series Charcoal

Model No.: BBO09G870

Dimensions: 31 3/4"W x 207/8"D x 227/16"H

Cut-Out Dimensions: 30 7/8"W x 22"D x 91/2"H

FEATURES

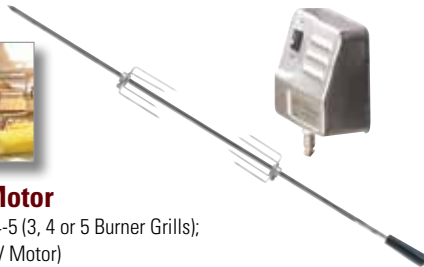
- Seamless Design with Durable 430-Stainless Steel 16-Gauge Construction
- 800 sq. in. Cooking Surface
- Removable Heavy-Duty Grates with V-Grate Cooking Design
- Adjustable Charcoal Tray with Handle Crank System
- Two-Position Full-Width Warming Rack
- Built-In Temperature Gauge
- Handle Crank Splash Guard



BARBECUE GRILL ACCESSORIES

Cal Flame is the first and only manufacturer to offer you the commercial-grade equipment to build a true outdoor kitchen. The very best in stainless steel grills and cooking equipment can now be yours. Side burners, food warmers and outdoor refrigerators eliminate the need to run inside and keep you where you want to be the most- at the grill!

ROAST



Rotisserie & Motor

Part#: BBQ08856P3-4-5 (3, 4 or 5 Burner Grills);
BBQ07100781-CC (12V Motor)

Enjoy the full bodied taste of rotisserie cooking with rotisseries that can be mounted in left or right configurations!

Dimensions: 32-1/2"W for 3 Burner • 40"W for 4 Burner
47-1/2"W for 5 Burner • 5"x 4-1/4"W x 2-3/4"H for Motor

DEEP FRY



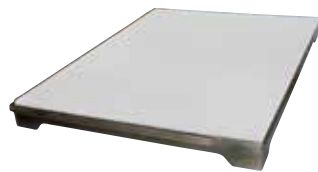
Deep Fryer Accessories Helper Set

Part#: BBQ09902

Turn part of your grill into a deep frying station with this deep fryer helper. You'll love preparing tasty fries!

Dimensions: 14-1/2"W x 19-1/4"D x 4"H

BAKE



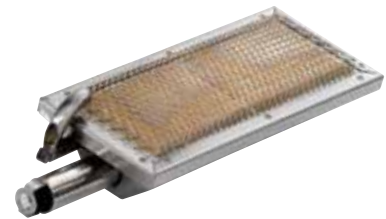
Pizza Brick Tray

Part#: BBQ07900

Give your pizza that brick oven flavor with this pizza brick tray. Keep the kids satisfied at every BBQ party!

Dimensions: 15-1/8"W x 20-1/4"D x 1-1/2"H

SEAR



Sear Zone Burner

Part#: BBQ07890P

Lock in the juice by searing your BBQ with this high-heat sear zone that replaces one of the grill burners.

Dimensions: 5-3/8"W x 12-1/2"D x 3-5/16"H

SMOKE



Smoke Tray

Part#: BBQ08854P

Infuse your outdoor BBQ with smoky flavor everyone loves with this convenient smoke tray that fits in your grill over any burner.

Dimensions: 5-1/4"W x 17-1/8"D x 2-1/2"H

GRIDDLE



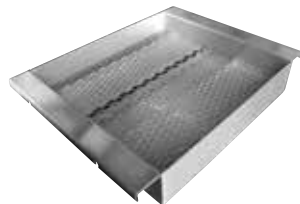
Griddle Tray w/ Storage

Part#: BBQ07862P

Enjoy fried foods like eggs with this griddle tray that comes with its own storage that blends with your island!

Dimensions: 15-3/8"W x 19-3/4"D x 4-1/2"H
Cut Out Dimen: 13-1/2"W x 19-5/8"D x 2-3/4"H

CHARCOAL



Charcoal Helper Tray

Part#: BBQ11859

Turn part of your Cal Flame grill into a charcoal & gas grill. Load removable tray with charcoal of your choice.

Dimensions: 13-5/8"W x 17-5/8"D x 3"H

COVER

BBQ Built In Grills Universal Adjustable Cover

Part#: BBQC2345BB



This cover keeps any Cal Flame grill looking its best by protecting it against weather damage. Cover fits up to 2,3,4 & 5 burner grills.

BARBECUE ISLAND ACCESSORIES

Convenient side burners make it easy to prepare multiple meals while you grill. Cook soups, stews and skillet dishes without having to run inside. Choose single and double side burners in the style that complements your backyard design. Drop-in accessories give you the functionality you need to handle any event in your backyard or garden. Keep side dishes fresh with food warmers and make any drink with cocktail centers and ice chests. At Cal Flame, it's all about choice.

SIDE BURNERS



Deluxe Double Side By Side Burner

Part#: BBQ14954P

Never reach over a hot pot or pan with a raised deluxe side by side burner.

Dimensions:

26"W x 14"D x 10-1/2"H

Cut Out Dimensions:

25"W x 13-3/8"D x 7-1/4"H



Standard Side By Side Flat Side Burner

Part#: BBQ08953P

The standard side-by-side burner is perfect for preparing tasty side dishes like soups, sauces or finger foods.

Dimensions:

28"W x 20-3/4"D x 6-5/8"H

Cut Out Dimensions:

26-5/8"W x 19-3/4"D x 4"H



Deluxe Double Side Burner

Part#: BBQ14899P

Maximize your counter space while preparing delicious side dishes with an inline double side burner.

Dimensions:

13"W x 21-1/2"D x 11-7/8"H

Cut Out Dimensions:

12-1/8"W x 22"D x 7-1/4"H



Standard Single Flat Side Burner

Part#: BBQ08852P

When you need another heat source for cooking, the standard single flat side burner is an excellent solution!

Dimensions:

12-1/2"W x 20-3/8"D x 5-1/2"H

Cut Out Dimensions:

11-1/4"W x 17-5/8"D x 3-5/8"H

DROP-IN ACCESSORIES



Stainless Steel Sink w/ Faucet & Soap Dispenser

Part#: BBQ11963

Keep your hands and utensils clean with this stainless steel sink with cold water and soap dispenser.

Dimensions:

15"W x 15"D x 6-1/4"H (17-1/4" Plunge)

Cut Out Dimensions:

14-1/4"W x 14-1/4"D x 7"H



Hibachi Drop-In Grill LP

Part#: BBQ14900P

Grilled foods are easy with the hibachi drop-in grill. You'll be enjoying eggs, pancakes and stir-fry in no time!

Dimensions:

24"W x 24-7/8"D x 11-1/2"H

Cut Out Dimensions:

23-1/4"W x 22-1/4"D x 9-1/2"H



Power Burner LP Drop-In Power

Part#: BBQ18875CP

Cook with a high BTU output ideally for large pots. The Cal Flame Power Burner has a total of 60,000 BTU.

Dimensions:

39"W x 24"D x 22 7/16"H

Cut Out Dimensions:

38 1/4"W x 22"D x 9 1/2"H



12" Drop-In Food Warmer

Part#: BBQ07888P

Turn your outdoor kitchen into the ultimate buffet with this 12" drop-in food warmer with three useful compartments!

Dimensions:

13-1/4"W x 25-1/4"D x 8-1/2"H

Cut Out Dimensions:

12-1/4"W x 21-1/2"D x 7-1/4"H



DROP-IN ACCESSORIES



12" Cocktail Center

Part#: BBQ12842P-12

Keep ice in a convenient place with the 12" cocktail center which comes with a towel rack and bottle opener.

Dimensions:

13"W x 23"D x 9-3/4"H

Cut Out Dimensions:

12"W x 22-3/8"D x 10"H



18" Cocktail Center

Part#: BBQ11842P-18

Keep drinks refreshed with the 18" cocktail center which conveniently holds ice, condiments and ice scoops.

Dimensions:

18"W x 25-3/4"D x 9-3/4"H

Cut Out Dimensions:

17-1/4"W x 24-1/4"D x 10"H



30" Drop-In Bar Center

Part#: BBQ07902

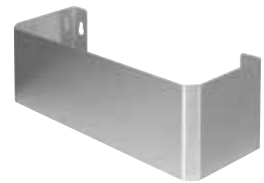
Turn your island into a bar with this 30" cocktail center, which holds ice and condiments and features a sink!

Dimensions:

30"W x 22-1/4"D x 10-3/8"H

Cut Out Dimensions:

29-1/4"W x 22-1/2"D x 10-1/2"H



12" or 15" Spice/Juice Rack

Part#: BBQ07846P-18 (Fits 18" & 30" Access Doors)

15" Part#: BBQ07846P-30 (Fits 30" Drop-In Bar Center)

Keep all of your juices and spices handy while you grill with this convenient spice/juice rack! Own it today!

Dimensions:

12"W x 4-3/4"D x 4-3/4"H

15"W x 4-3/4"D x 4-3/4"H



Drop-In Ice Bucket

Part#: BBQ14864

Convenient way to store ice for all your backyard festivities. Comes with 20.82" x 14.20" lid and drain.

Dimensions:

17"W x 23-3/4"D x 14-1/4"H

Cut Out Dimensions:

21"W x 24"D x 14-1/2"H



BARBECUE ISLAND ACCESSORIES

Cal Flame provides several storage solutions for keeping spices, cooking utensils, propane, aprons and everything else nearby.

DOORS & DRAWERS



18" Vertical Door

Part#: BBQ09841P-18

This durable 18" stainless steel vertical door will keep all your BBQ gadgets and necessities hidden.

Dimensions:

18"W x 20"H

Cut Out Dimensions:

15-1/2"W x 17-1/2"H



27" Horizontal Door

Part#: BBQ07841P-27

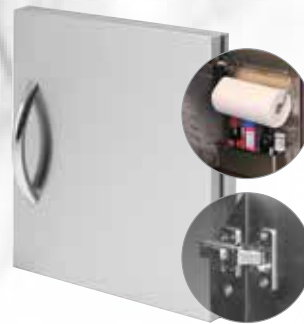
This beautiful 27" horizontal door is perfect for islands that won't accommodate double doors.

Dimensions:

27"W x 20"H

Cut Out Dimensions:

24-1/2"W x 17-1/2"H



18" Single Access Door

Part#: BBQ10839P-18

This heavy-duty 18" door is constructed from stainless steel and is perfect for most islands!

Dimensions:

17-3/4"W x 1-1/4"D x 20-3/4"H

Cut Out Dimensions:

16-1/2"W x 19-1/2"H



30" Double Access Door

Part#: BBQ10839P-30

These durable 30" double doors are perfect for when you need to store large items inside your BBQ island!

Dimensions:

30"W x 2"D x 20-3/4"H

Cut Out Dimensions:

28-1/2"W x 19-1/4"H



32" Vertical Door

Part#: BBQ15832-32

This durable 32" stainless steel vertical door will keep all your BBQ gadgets and necessities hidden.

Dimensions:

20"W x 32"H

Cut Out Dimensions:

17-1/2"W x 29-1/2"H



Towel Holder Rack

Part#: BBQ08000500

For the ultimate in convenience add this towel holder rack to your 18" or 30" Access Doors. Add one or more!

Dimensions:

11-3/4"W x 4-3/4"H



18" Door & Drawer Combo

Part#: BBQ11840P-18

This 18" door and drawer combo lets you to keep your barbecue tools protected from the elements.

Dimensions:

18"W x 20-3/4"D x 20-3/4"H

Cut Out Dimensions:

17-1/8"W x 20-1/2"D x 19-1/4"H



30" Door & Drawer Combo

Part#: BBQ11840P-30

This 30" combo incorporates two internal pull-out drawers and pull-out propane tray in a sealed enclosure.

Dimensions:

30" W x 20-5/8" D x 22" H

Cut Out Dimensions:

29-1/4" W x 20-1/2"D x 19-1/4"H



Complete Utility Storage Set

Part#: BBQ07909

This complete utility storage set separates your food and features a tray to keep your propane or waste basket on.

Dimensions:
52-1/2"W x 20-3/4"D x 20-3/4"H
Cut Out Dimensions:
51-1/2"W x 19-1/2"D x 20-3/8"H



2 Drawer Horizontal

Part#: BBQ08867

Keep your important grilling tools, like spatulas, tongs and brushes close by with this 2 drawer horizontal accessory.

Dimensions:
39-1/4"W x 20-1/2"D x 10"H
Cut Out Dimensions:
37-3/4"W x 8-1/2"H



2 Drawer Storage Deep Drawer

Part#: BBQ07868P

You'll enjoy this 2 drawer storage set which offers deep dimensions for oversized grilling tools like tongs and forks.

Dimensions:
13-1/8"W x 20-1/2"D x 20-3/4"H
Cut Out Dimensions:
10-1/2"W x 19-3/4"D x 17-3/8"H



3 Drawer Storage Wide

Part#: BBQ08866

You can never have enough outdoor cooking storage. This 3 drawer storage accessory offers wide dimensions.

Dimensions:
18"W x 20-1/2"D x 20-3/4"H
Cut Out Dimensions:
15-1/4"W x 20-1/4"D x 17-1/4"H



Paper Towel Storage Door

Part#: BBQ07910

Spills and splatters are never an issue when you have paper towels close by with this paper towel storage door!

Dimensions:
10-1/2"W x 6-1/4"D x 16-1/2"H
Cut Out Dimensions:
8-1/2"W x 14-1/4"H

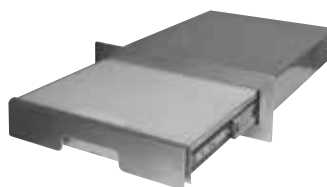


Propane Tank Drawer

Part#: BBQ07857P

Store your BBQ grill fuel in an elegant way with this convenient propane tank drawer that features a slide-out tray!

Dimensions:
16-5/8"W x 16-5/16"D x 22-5/8"H
Cut Out Dimensions:
14-3/4"W x 16-1/2"D x 20-1/4"H



Pull Out Cutting Board

Part#: BBQ07891P

Every outdoor chef needs a place for cutting food. This pullout cutting board is perfect for all your cooking needs.

Dimensions:
15-3/8"W x 19-1/2"D x 4-3/4"H
Cut Out Dimensions:
13-1/4"W x 19-5/8"D x 2-7/8"H



Bottle Opener and Catcher

Part#: BBQ07901

Open up a cold one easily with one hand thanks to this bottle opener that comes with a cap catcher!

Dimensions:
6-3/4"W x 2-1/2"D x 3-3/4"H

BARBECUE ISLAND ACCESSORIES

Enjoy the convenience of a food warmer that discreetly hides itself in a drawer. Kids will love the electric pizza oven drawer that can also double as a dish warmer for keeping meals hot. Keep food fresh and ready for cooking or chill drinks with stainless steel refrigerators. Host keg parties in style with a built-in beer tap. Have sodas ready for the kids in the elegant beverage cooler. The Cal Flame ice maker ensures you never have to run to the store for more ice!

OVEN & REFRIGERATORS



2-in-1 Oven–Warmer and Pizza Oven (110V)

Part#: BBQ14967E

Whether you're baking a pizza or want to keep a plate of food warm, this 2-in-1 oven-warmer is the ideal solution!

Dimensions:

30"W x 21-1/4"D x 11-1/2"H

Cut Out Dimensions:

28-3/4"W x 20-1/4"D x 10"H

Includes pizza brick, 2 stainless steel serving pans with covers and removable rack.



Stainless Steel Refrigerator

Part#: BBQ09849P

The stainless steel refrigerator is perfect for keeping your beverages cold and your food fresh at all times.

Dimensions:

20-3/8"W x 21-1/2"D x 31-3/8"H

Cut Out Dimensions:

21"W x 32-1/4"H



Beer Tap Refrigerator

Part#: BBQ09843B

Impress your friends on game-day with this built-in beer tap refrigerator that will accommodate your keg.

Dimensions:

21-3/8"W x 25-3/8"D x 32-3/8"H

Cut Out Dimensions:

22"W x 34"H



Stainless Steel Cleaner & Polishing Towel

Part#: BBQ25000386

Removes greasy film and watermarks. Resists fingerprints and streaking. Repels water; preserves surface while protecting against deterioration.



Utensil set with Apron and Glove

Part#: BBQ11100082

Utensil Set includes (3) Stainless Steel BBQ Utensils, (1) Apron, (1) BBQ Mitt, and (1) Utensil Carrying Bag





Outdoor Stainless Steel Refrigerator

Part#: BBQ10710

Built to withstand the elements, the outdoor stainless steel refrigerator keeps your beverages cold in any kind of weather!

Dimensions:

14-3/4"W x 23"D x 33"H

Cut Out Dimensions:

15-1/4"W x 24"D x 34"H



Outdoor Stainless Steel Ice Maker

Part#: BBQ10700

You'll never have to leave the party to get ice with the outdoor rated ice maker.

Dimensions:

14-3/4"W x 24"D x 33"H

Cut Out Dimensions:

15-1/4"W x 24"D x 34"H



Outdoor Stainless Steel Beverage Cooler

Part#: BBQ10715

Refreshments are just as important as great food. Add this outdoor beverage cooler and never run out of drinks!

Dimensions:

14-3/4"W x 23"D x 32-1/2"H

Cut Out Dimensions:

15-1/4"W x 24"D x 34"H





KAMADO SMOKER

Made from heavy ceramic, the Kamado Smoker allows for excellent heat retention and features a fireproof fabric seal to maintain heat within the vessel. Desired temperature can be achieved and maintained by precise control of airflow via the top and bottom vents. The Cal Flame Kamado Smoker can be used to grill, smoke and even bake your favorite dishes year-round. The interior layer retains the heat inside the Kamado. Heat is absorbed and refracted within the firebox located on the bottom of the smoker. Perfect for slow and cool smoking, it doesn't require constant fire tending, unlike traditional smokers. The Kamado cooks food thoroughly without drying it out, leaving it moist with full, smoky flavor.



Kamado Smoker Grill

Part#: BBQ15K21

Dimensions:

Top: 24-1/2"W x 24-1/2"D x 29-1/2"H

Bottom: 20.6"W x 20"D x 6"H

Cut Out Dimensions:

28-3/4"W x 20-1/4"D x 10"H



Cast Iron Top Vent with Cal Flame Logo



Lid Handle in Natural Finish with Cal Flame Logo



Folding Side Shelves



Slide-Out Ash Drawer



Stainless Steel Stand with Locking Wheels



OUTDOOR ENTERTAINMENT CENTER

Cal Flame is proud to present the Outdoor Entertainment Center! This new must-have island from Cal Flame is designed to give you the best viewing experience ever! With ample room for a large television, your friends and loved ones will be begging to gather around and watch their favorite movies and programs! Four side LED lights highlight easy access storage areas. A center ice container allows for quick access to chilled ice when you need it. Two temperature controlled refrigerators give ample room for food and beverages. A central bottom storage container can store your favorite room temperature snacks or accessories. The Outdoor Entertainment Center is available in all tiles and stucco.



OUTDOOR ENTERTAINMENT 1

Part#: ODC1

Enjoy serious backyard entertainment with a Cal Flame ODC-1 Paradise Outdoor Entertainment Center. This must-have entertainment center is designed to give you the best outdoor viewing experience ever. With an opening of 54 in. wide by 27 in tall, this center will accommodate most 50 inch wall mounted flat screen televisions. Your friends and loved ones will be begging to gather around to watch their favorite shows. Four side LED lights highlight easy access storage areas. Two temperature controlled refrigerators give ample room for food and beverages. Behind the 30 inch double access doors is a bottom storage space for your favorite room temperature snacks or accessories. The unit is finished in a neutral color Stonnycreek Amerstone stucco. The beautiful two tone porcelain tile counter and accents are expertly designed with Tropical Cream field tiles and a Tropical Brown border tiles.

Dimensions:

84" W x 36" D x 84" H (TV Area 54" W x 27" H)



Four side LED lights
With Shelving



USB & Cable Hook-Ups
Electrical Outlet



Light Switch &
Extra Electrical Outlet



OUTDOOR ENTERTAINMENT 2

Part#: ODC2

Enjoy serious backyard entertainment with a Cal Flame ODC-2 Crystal Outdoor Entertainment Center. This must-have entertainment center is designed to give you the best outdoor viewing experience ever. With an opening of 54 in. wide by 27 in tall, this center will accommodate most 50 inch wall mounted flat screen televisions. Your friends and loved ones will be begging to gather around to watch their favorite shows. Four side LED lights highlight easy access storage areas. Behind the 30 inch double access doors is a bottom storage space for your favorite room temperature snacks or accessories. The unit is finished in a neutral color Stonnycreek Amerstone stucco. The beautiful two tone porcelain tile counter and accents are expertly designed with Tropical Cream field tiles and a Tropical Brown border tiles.

Dimensions:

84" W x 36" D x 84" H (TV Area 54" W x 27" H)



Two-Door Storage Area



Two Refrigerators

ANATOMY OF A BBQ ISLAND

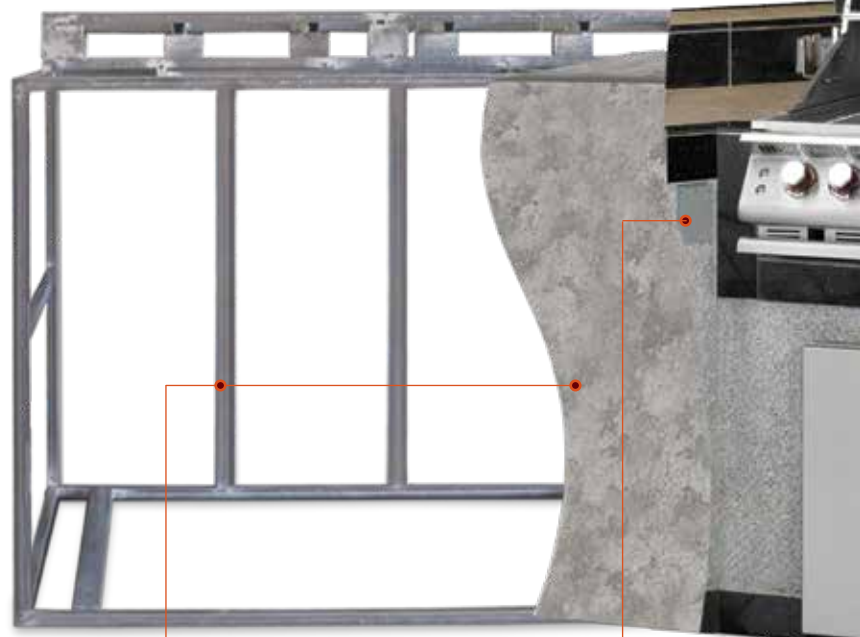
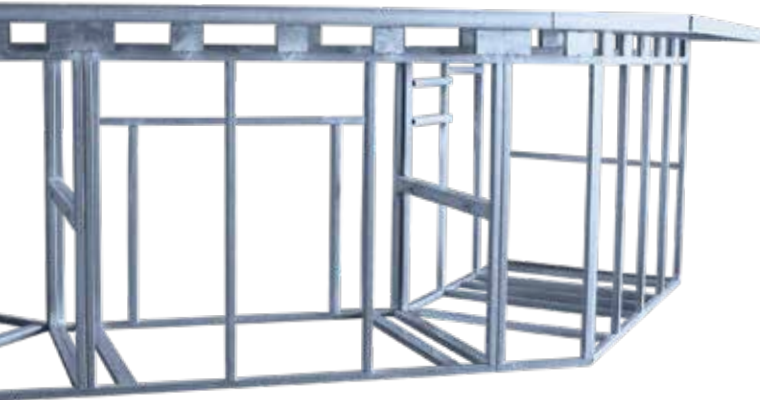
Quality standards are at the core of every Cal Flame outdoor kitchen. From the inside out, the quality construction is undeniable. Each barbecue island begins with a sturdy metal frame constructed from commercial-grade 16-gauge galvanized steel. The island is then dressed in Hardibacker ceramic tile backer board for added durability and moisture resistance. Additionally, your outdoor kitchen is finished in the material of your choice and fitted with the cooking equipment you selected. Best of all, with premium electronic options to choose from, you can build a complete entertainment center outdoors!

BUILT TO LAST

Designed for lasting durability and quality constructed out of premium outdoor-rated materials

PROFESSIONALLY ENGINEERED

Cal Flame BBQ Islands are thoughtfully designed to bring the joy of cooking with emphasis on usable counter work space, ergonomic styling and storage need. Built to last for years of entertainment.



Shown with Natural Stone Field and Natural Stone Trim, One-Tone. Many colors to choose from.



16-GAUGE GALVANIZED STEEL FRAME

For long lasting integrity, the BBQ island frame is manufactured with fully-welded 16-gauge galvanized steel.

HARDIBACKER CERAMIC TILE BACKER BOARD

Moisture-resistance and durability make Hardibacker ceramic tile backer board the perfect base to your create your island's customized finish.



EXTERNAL ELECTRICAL OUTLET

Convenient electric sockets allow you to hook up accessories like blenders, fans and lamps.

COUNTER TOP DESIGN STYLES



Natural Stone Tile



Two Tone Natural Stone Tile Design 1





COUNTER TOP FINISHES
 Finish your counter top with granite, porcelain tile or natural stone tile. Tile options include single and two-tone styles. The choice is yours!

LIGHTING (OPTIONAL)
 Nighttime dining and entertainment are illuminated by colorful LED lighting in your choice of colors.



BASE FINISHES
 Choose from a wide selection of Ameristone Stucco and Cal Stone styles to complement your Home Resort design.

BASE DESIGNS
 Outdoor kitchens finished in American Stucco can be accented by assorted tile designs—including trees, geometric patterns and sea life.

VENTILATION
 Vents are built into the base of every outdoor kitchen to allow heat and trapped gas to escape and also makes clean-up quick.



FREEDOM SOUND (OPTIONAL)



- Bluetooth audio, high-output, high-range speaker system with 4" speakers
 - 72 watt weatherproof speakers
 - Bluetooth capability
 - High Power Subwoofer for ultimate sound system)
 - Waterproof Marine-Grade Speakers
- Connect your smart device and enjoy high fidelity sound year after year. Change the station with the simple touch of a button and let the fun continue long into the evening.

AMERISTONE STUCCO

- Weather resistant and beautiful Ameristone stucco comes in different choices to complement any décor
- Ameristone adheres more securely than traditional stucco for a finish that lasts even longer



UMBRELLA HOLE (OPTIONAL)

Umbrella hole is cut directly into the counter and trimmed with a stainless steel ring and stabilizing base. *Fits most outdoor umbrellas



SOLID FOOT REST (OPTIONAL)

Footrests provide a convenient relief area during grill-side dining and entertaining.

(OPTIONAL)
 Shown with Arbor designs and optional 3 LED Multi-Colored lights.



3-INCH BOTTOM TRIM (OPTIONAL)

Provide a complete enhanced look to your outdoor kitchen while protecting the base of your island for extra strength and durability.



CUSTOM PAVILION BBQ ISLANDS

Each BBQ Island begins with a sturdy metal frame constructed from commercial-grade 16-Gauge Galvanized Steel. The island is then dressed in Hardibacker ceramic tile backer board for added durability and moisture resistance. Additionally, your outdoor kitchen is finished in the material of your choice and fitted with the cooking equipment you selected. Best of all, with premium electronic options to choose from, you can build a complete entertainment center outdoors! Available Designs: 6' Base Designs: 8' Base Designs: 10' Base Designs.



Grand Pavilion **GPV3100**

Dimensions:

190"W x 45"D x 46.25"H



Visit the Cal Flame website for more detailed information and dimensions.

Grand Pavilion and Pavilion Islands are customizable and can fit any 3, 4 or 5 burner grill and selected accessory combination.



Grand Pavilion **GPV3032**

Dimensions:
134.5"W x 45"D x 52" H



Pavilion **PV7000**

Dimensions:
126"W x 44"D x 65" H



Pavilion **PV6016**

Dimensions:
73.75"W x 45"D x 46" H



Pavilion **PV6004**

Dimensions:
73.75"W x 45"D x 33.75" H



LUXURY BACKYARD KITCHEN BBQ ISLANDS

Turn your backyard into a state-of-the-art outdoor kitchen with the Cal Flame LBK BBQ Island Series! This breathtaking barbecue island series allows you to choose the size and color options that best fit your lifestyle and backyard landscape. You pick the size, shape, design and equipment that meets your needs and satisfies your desires. Available Designs: 4' Base Designs: 6' Base Designs: 8' Base Designs.



LBK **870** R/L
Dimensions:
96" W x 40" H

Visit the Cal Flame website for more detailed information and dimensions.





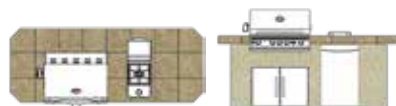
LBK 830 R/L
Dimensions:
 111.5" W x 40" H



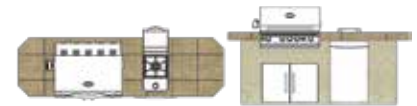
LBK 820 R/L
Dimensions:
 95.5" W x 38" H



LBK 810
Dimensions:
 95.5" W x 38" H



LBK 801
Dimensions:
 95.5" W x 38" H



LUXURY BACKYARD KITCHEN BBQ ISLANDS

Turn your backyard into a state-of-the-art outdoor kitchen with the Cal Flame LBK BBQ Island Series! This breathtaking barbecue island series allows you to choose the size and color options that best fit your lifestyle and backyard landscape. You pick the size, shape, design and equipment that meets your needs and satisfies your desires. Available Designs: 4' Base Designs: 6' Base Designs: 8' Base Designs.



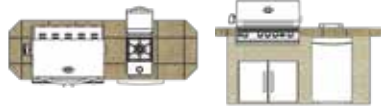
LBK 710
Dimensions:
83.5" W x 38" H





LBK 701

Dimensions:
83.50"W x 38"H



LBK 601

Dimensions:
70.75"W x 38"H



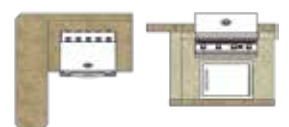
LBK 402R

Dimensions:
76.5"W x 41.5"H



LBK 401 R/L

Dimensions:
66"W x 40"H





ANATOMY OF A FIREPLACE

Cal Flame outdoor fireplaces add a sense of enchantment, magic and nostalgia to any backyard or garden. Homeowners will enjoy the beauty and dynamics that a fireplace brings to their Home Resort while guests will appreciate the year-round nighttime entertainment. Every Cal Flame fireplace is constructed to the highest standard, utilizing a 16-gauge galvanized steel frame and reinforced by Hardibacker tile backer board. Your fire fixture will be a source of elegance and entertainment for years to come.

EXTENDED CHIMNEY

Selecting the correct chimney and designing the layout of the installation is critical to good performance. The taller the chimney, the more draft it will produce at a given temperature difference.

FIREBOX 36-INCH ARCH DESIGN

Metal with fiberglass panels and straight firebox. Available on all fireplaces except FRP-905.

STAINLESS STEEL BURNER

Light up the night and drive away the cold with a powerful 55,000 BTUs of heat.

GRATE

All Cal Flame fireplaces benefit from this 18-inch grate which supports standard fire logs.

LAVA ROCKS

As a standard feature on all natural gas or liquid propane fireplaces, Lava rocks accent the base of the firebox.

FIRE LOGS

Decorative logs come standard with 36-inch fireboxes. Log sizes are measured by the front largest log in the set: • 36-Inch Firebox: 7 logs, 24-inch.

ON/OFF SWITCH

Every fireplace switch utilizes a Piezo ignition system, which is a battery-powered electronic ignition.

LIQUID PROPANE AND NATURAL GAS CONVERTIBLE

For your convenience, Cal Flame fireplaces can take advantage of your choice of fuel.

SIMULATED STONE ARCH

Add a touch of distinction with a simulated stone arch. Available on 906, 907, 908, 909, 910 and 915.

MANTLE

Decorate your fireplace with your favorite knick-knacks or plants. Available in Natural Stone Tile, Porcelain Tile or Bedrock® Panel.

BACK

Fireplace backs are styled with Ameristone stucco in the color of your choice.



WRAPPED BOTTOM MANTLE

This mantle wraps around the front and sides of the fireplace creating more room for personal decorations. Available in Natural Stone Tile, Porcelain Tile or Bedrock® Panel.



EXTENDED BOTTOM MANTLE

Accent the base of your fireplace with a sophisticated extended base in front of the firebox. Available in Natural Stone Tile, Porcelain Tile or Bedrock® Panel.



FRP-908-1 As Shown:
Bedrock® Panel Top Mantel, Bedrock® Panel Rounded Arch 36", No Bottom Mantel



FRP-908-2 As Shown:
Tiled Top Mantel, Bedrock® Panel Rounded Arch 36" Extended Bottom Mantel*

*NOTE: THE EXTENDED BOTTOM MANTLE ADDS APPROXIMATELY 12" IN DEPTH



FRP-908-3 As Shown:
Tiled Top Mantel, Bedrock® Panel Rounded Arch 36" Wrapped Bottom Mantel**

**NOTE: THE WRAPPED BOTTOM MANTLE ADDS APPROXIMATELY 12" IN DEPTH AND 24" IN WIDTH



STANDARD WITH FIREPLACES:
7 PIECE 24" FIRE LOGS

FIREPLACE SERIES

Cal Flame outdoor fireplaces are the perfect way to extend the outdoor season and seek warmth in the great outdoors. The innovative Cal Flame outdoor fireplaces feature all the latest technology and allow you to enjoy cool evenings.



Control is located on right side of fireplace



FRP-915

BURNER BTU OUTPUT: 55,000

DIMENSIONS* WITH 36" FIRE BOX: 72"W X 28"D X 78"H

STANDARD FEATURES: Ameristone Stucco, Porcelain Tile, 7-Piece Log Set With Grate

A Cal Flame outdoor fireplace instantly adds a warm glow to your outdoor home resort, creating a calm, inviting ambiance. Cal Flame outdoor fireplaces can be customized to fit your personal taste and complement any backyard landscape. Designed with the finest material and craftsmanship, Cal Flame outdoor fireplaces are built to withstand all outdoor elements for years of enjoyment. Cal Flame outdoor fireplaces feature a fully welded 16-gauge galvanized stainless steel, sturdy one-piece construction, ETL approval and have a liquid propane/natural gas option. Enjoy the warmth of Cal Flame today!

Customize with your choice of Ameristone Stucco in 5 different Colors, or 8 beautiful optional Cultured Stone styles. Accent Trim with Porcelain Tile or Natural Stone Tile.

FRP-910-3

BURNER BTU OUTPUT: 55,000

DIMENSIONS* WITH 36" FIRE BOX: 72"W X 38"D X 78"H

STANDARD FEATURES: Ameristone Stucco, Porcelain Tile, 7-Piece Log Set With Grate



FRP-910-1

DIMENSIONS* WITH 36" FIRE BOX: 48"W X 28"D X 78"H

STANDARD FEATURES: Ameristone Stucco, Porcelain Tile, 7-Piece Log Set With Grate



FRP-910-2

DIMENSIONS* WITH 36" FIRE BOX: 48"W X 38"D X 78"H

STANDARD FEATURES: Ameristone Stucco, Porcelain Tile, 7-Piece Log Set With Grate



FRP-909-3

BURNER BTU OUTPUT: 55,000
DIMENSIONS* WITH 36" FIRE BOX: 72"W X 38"D X 78"H
STANDARD FEATURES: Ameristone Stucco, Porcelain Tile, 7-Piece Log Set With Grate

FRP-908-3

BURNER BTU OUTPUT: 55,000
DIMENSIONS* WITH 36" FIRE BOX: 72" W X 38" D X 78" H
STANDARD FEATURES: Ameristone Stucco, Porcelain Tile, 7-Piece Log Set With Grate

FRP-906-3

BURNER BTU OUTPUT: 55,000
DIMENSIONS* WITH 36" FIRE BOX: 72"W X 38"D X 59"H
STANDARD FEATURES: Ameristone Stucco, Porcelain Tile, 7-Piece Log Set With Grate



FRP-909-1
DIMENSIONS* WITH 36" FIRE BOX: 48"W X 28"D X 78"H
STANDARD FEATURES: Ameristone Stucco, Porcelain Tile, 7-Piece Log Set With Grate

FRP-909-2
DIMENSIONS* WITH 36" FIRE BOX: 48"W X 38" D X 78"H
STANDARD FEATURES: Ameristone Stucco, Porcelain Tile, 7-Piece Log Set With Grate

FRP-908-1
DIMENSIONS* WITH 36" FIRE BOX: 48"W X 30"D X 78"H
STANDARD FEATURES: Ameristone Stucco, Porcelain Tile, 7-Piece Log Set With Grate

FRP-908-2
DIMENSIONS* WITH 36" FIRE BOX: 48"W X 40"D X 78"H
STANDARD FEATURES: Ameristone Stucco, Porcelain Tile, 7-Piece Log Set With Grate

FRP-906-1
DIMENSIONS* WITH 36" FIRE BOX: 48"W X 28" D X 59"H
STANDARD FEATURES: Ameristone Stucco, Porcelain Tile, 7-Piece Log Set With Grate

FRP-906-2
DIMENSIONS* WITH 36" FIRE BOX: 48"W X 38" D X 59"H
STANDARD FEATURES: Ameristone Stucco, Porcelain Tile, 7-Piece Log Set With Grate





ANATOMY OF A FIREPIT

Whether it's a campfire in the woods, a bonfire at the beach or a firepit in the privacy of an outdoor Home Resort, people have enjoyed the relaxing and meditative properties of an open fire. Cal Flame captures that magic of fire in every firepit, which is constructed with 16-gauge galvanized steel and Hardibacker tile backer board for support and moisture resistance. Cal Flame firepits offer lasting and vibrant nighttime entertainment that can't be beat.

STAINLESS STEEL BURNER

The powerful burner emits 55,000 BTUs and will easily keep everyone around the firepit comfortable on a chilly night.



FIRE LOGS AND LAVA ROCKS

All Cal Flame firepits come equipped with a 4-piece fire log set as well as lava rocks or give your fire rustic naturalness.



TABLETOP FIRE

For the ultimate in outdoor entertainment and relaxation, tabletop firepits can accommodate up to six guests. The innovative FPT-H1050T features a table top style and elegant footrest that will add lasting beauty and variety to your Home Resort.

SHAPES

Firepits come in square, hexagonal (6-sided) and rectangle shapes to accommodate any backyard preference.



LIQUID PROPANE OR NATURAL GAS CONVERTIBLE

Use liquid propane tanks or have a natural gas line professionally installed.

HEIGHT

Firepits are available from 25" in height to replicate the campfire experience to 45" in height to create a conversational area that will accommodate full-height barstools. The choice is yours!



ON/OFF SWITCH

Every fireplace switch utilizes a Piezo ignition system, which is a battery-powered electronic ignition.



FIREPIT SERIES

Customize with your choice of Ameristone Stucco in 5 different Colors. 8 beautiful Cultured Stone styles to choose from. Accent Trim with Porcelain Tile or Natural Stone Tile. Also available on selected models: LED Lighting, multi-setting light show or simply program to your favorite single color. Liquid propane and natural gas option available.



FPT-S301M

BURNER BTU OUTPUT:
55,000

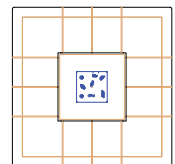
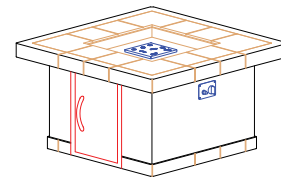
DIMENSIONS:
48" x 48" D x 25" H

STANDARD FEATURES:
Ameristone Stucco, Porcelain Tile,
4 Piece Log Set w/ Lava Rocks,
LP/NG Convertible

***CUSTOMIZE TO YOUR DECOR**



Control is located on right side of all firepits



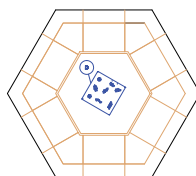
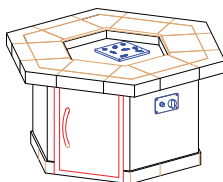
FPT-H401M

BURNER BTU OUTPUT: 55,000

DIMENSIONS: 55" W x 48" D x 25" H

STANDARD FEATURES:
Ameristone Stucco, Porcelain Tile,
4 Piece Log Set w/ Lava Rocks,
LP/NG Convertible

***CUSTOMIZE TO YOUR DECOR**





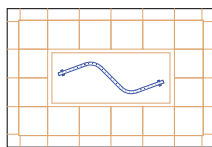
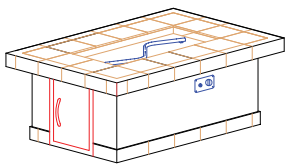
FPT-RT501M

BURNER BTU OUTPUT: 55,000

DIMENSIONS: 48" W x 72" D x 25" H

STANDARD FEATURES:
 Ameristone Stucco, Porcelain Tile,
 4 Piece Log Set w/ Lava Rocks,
 LP/NG Convertible

**CUSTOMIZE TO YOUR DECOR*



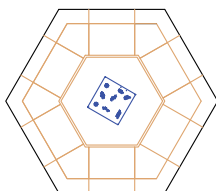
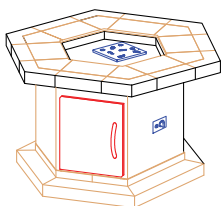
FPT-R1050T

BURNER BTU OUTPUT: 55,000

DIMENSIONS: 61" HEXAGON x 45" H

STANDARD FEATURES:
 Ameristone Stucco, Porcelain Tile,
 4 Piece Log Set w/ Lava Rocks,
 LP/NG Convertible

**CUSTOMIZE TO YOUR DECOR*





PROUDLY SERVING YOU SINCE 1978 - 40 YEARS STRONG!

Cal Flame[®]



CE



1462 East Ninth Street, Pomona, CA 91766 • 800-225-7727

WWW.CALFLAMEBBO.COM

©2018 Cal Flame, a division of LMS. All rights reserved. Cal Flame and Cal Spas. are trademarks of LMS, Inc. All other brands, product names, company names, trade names, trademarks and service marks are the property of their respective owners, and are used with permission. Cal Flame reserves the right to enhance, modify or discontinue products at any time without notice. Specifications may change without notice. Dimensions are approximate. Products are manufactured under US patent. Patent numbers are available. Photographs and graphics are for illustration purposes only and may differ from actual product.

2926-18
10.18.18
LTR2018BBO-BR